

AM-120U Series U Channel Switching Power Supplies

■ PIN ASSIGNMENT

▲ CONNECTOR 1

● AC INPUT VERSION

(MOLEX#09-65-2058 OR EQUIVALENT;
MATING CONNECTOR= MOLEX#09-50-3051)

PIN1	FG
PIN2	KEY
PIN3	NEUTRAL
PIN4	KEY
PIN5	LINE

▲ CONNECTOR 2

(MOLEX#09-65-2148 OR EQUIVALENT;
MATING CONNECTOR= MOLEX#09-50-3141)

● 1 OUTPUT

PIN1~PIN5	V1
PIN6~PIN10	RET
PIN11	NC
PIN12	KEY
PIN13~14	NC

● 2,3,4 OUTPUTS (V4 POSITIVE)

PIN1~PIN3	V1
PIN4~PIN7	RET
PIN8~PIN9	V2
PIN10	NC
PIN11	V3
PIN12	KEY
PIN13	RET
PIN14	V4 (+)

2,3,4 OUTPUTS (V4 NEGATIVE)

PIN1~PIN3	V1
PIN4~PIN7	RET
PIN8~PIN9	V2
PIN10	NC
PIN11	V3
PIN12	KEY
PIN13	V4 (-)
PIN14	RET

● 2,3,4 OUTPUTS (V4 ISOLATED)

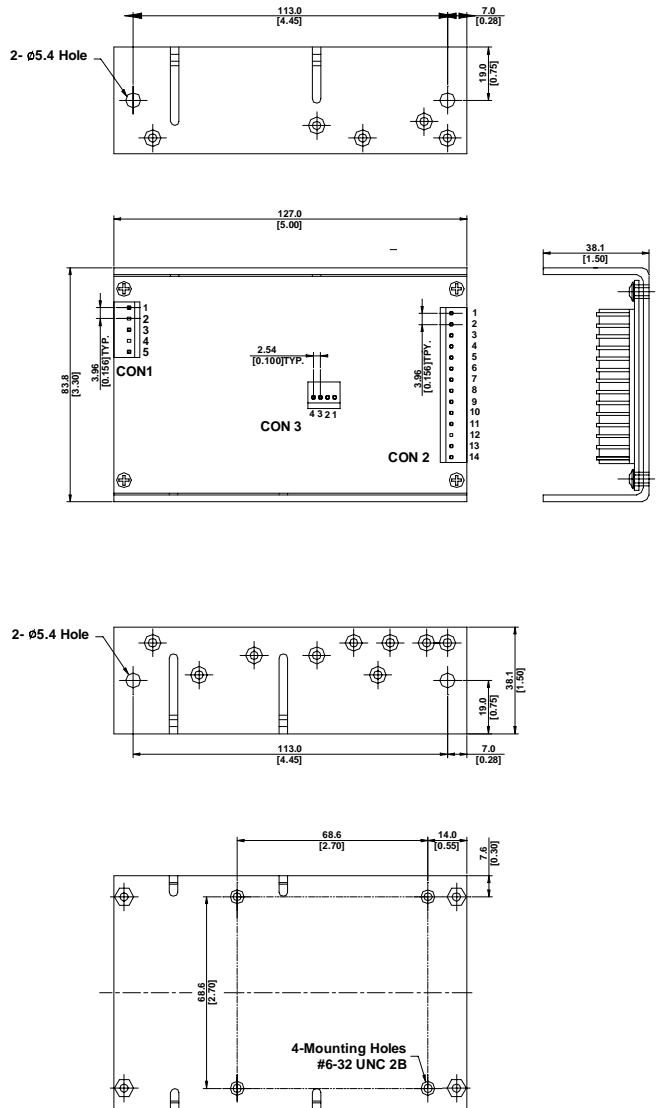
PIN1~PIN3	V1
PIN4~PIN7	RET
PIN8~PIN9	V2
PIN10	NC
PIN11	V3
PIN12	KEY
PIN13	V4 RET
PIN14	V4

▲ CONNECTOR 3 (OPTIONAL)

(MOLEX#22-27-2041 OR EQUIVALENT;
MATING CONNECTOR= MOLEX#22-01-3047)

PIN1	S-	PIN3	RET
PIN2	S+	PIN4	PG

■ MECHANICAL DRAWING (3.3"×5"×1.5")



TOLERANCE: mm ± 0.5
[inch] ± 0.02

UNIT: mm
[inch]