

AM-120D Series U Channel Switching Power Supplies

■ PIN ASSIGNMENT

▲ CONNECTOR 1

- DC INPUT VERSION
(MOLEX#09-65-2058 OR EQUIVALENT;
MATING CONNECTOR= MOLEX#09-50-3051)
- PIN1 NC
- PIN2 NEGATIVE(-)
- PIN3 NEGATIVE(-)
- PIN4 POSITIVE(+)
- PIN5 POSITIVE(+)

▲ CONNECTOR 2

(MOLEX#09-65-2148 OR EQUIVALENT;
MATING CONNETOR= MOLEX#09-50-3141)

● 1 OUTPUT

- PIN1~PIN5 V1
- PIN6~PIN10 RET
- PIN11 NC
- PIN12 KEY
- PIN13~14 NC

● 2,3,4 OUTPUTS (V4 POSITIVE) 2,3,4 OUTPUTS (V4 NEGATIVE)

- | | |
|---------------|---------------|
| PIN1~PIN3 V1 | PIN1~PIN3 V1 |
| PIN4~PIN7 RET | PIN4~PIN7 RET |
| PIN8~PIN9 V2 | PIN8~PIN9 V2 |
| PIN10 NC | PIN10 NC |
| PIN11 V3 | PIN11 V3 |
| PIN12 KEY | PIN12 KEY |
| PIN13 RET | PIN13 V4 (-) |
| PIN14 V4 (+) | PIN14 RET |

● 2,3,4 OUTPUTS (V4 ISOLATED)

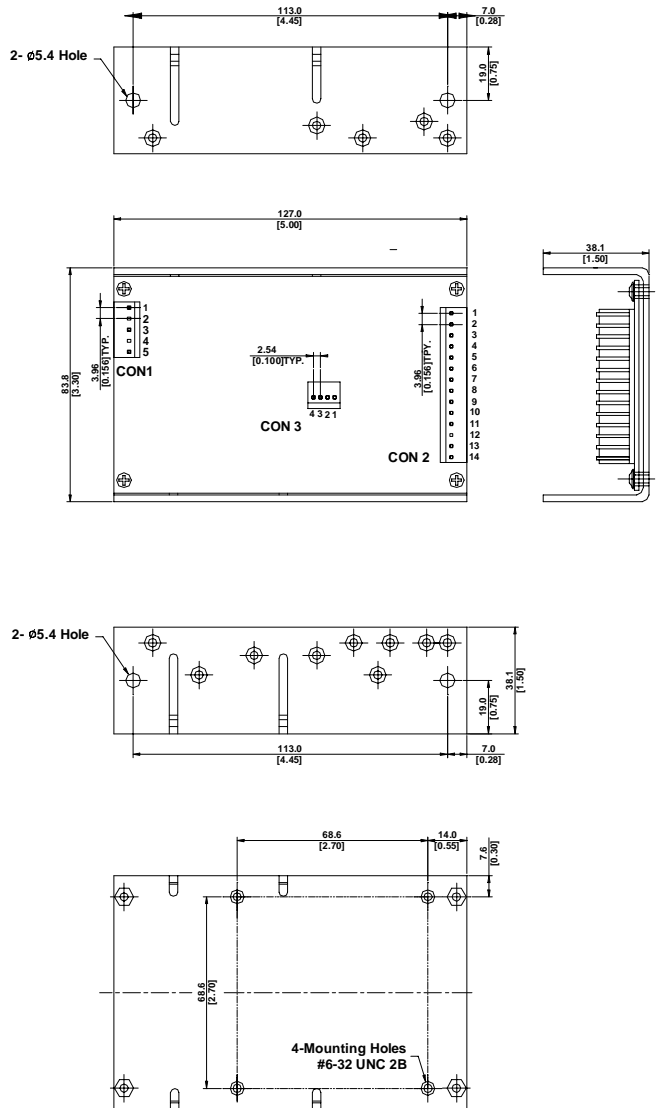
- PIN1~PIN3 V1
- PIN4~PIN7 RET
- PIN8~PIN9 V2
- PIN10 NC
- PIN11 V3
- PIN12 KEY
- PIN13 V4 RET
- PIN14 V4

▲ CONNECTOR 3 (OPTIONAL)

(MOLEX#22-27-2041 OR EQUIVALENT;
MATING CONNETOR= MOLEX#22-01-3047)

- | | |
|---------|----------|
| PIN1 S- | PIN3 RET |
| PIN2 S+ | PIN4 PG |

■ MECHANICAL DRAWING (3.3"*5"*1.5")



TOLERANCE: mm +/-0.5
[inch] +/-0.02

UNIT: mm
[inch]