

AL-070D Series Open Frame Switching Power Supplies

■ PIN ASSIGNMENT

▲ CONNECTOR 1

● DC INPUT VERSION

(MOLEX#09-65-2058 OR EQUIVALENT;
MATING CONNECTOR= MOLEX#09-50-3051)

PIN1	NC
PIN2	NEGATIVE(-)
PIN3	NEGATIVE(-)
PIN4	POSITIVE(+)
PIN5	POSITIVE(+)

▲ CONNECTOR 2

(MOLEX#09-65-2068 OR EQUIVALENT;
MATING CONNECTOR= MOLEX#09-50-3061)

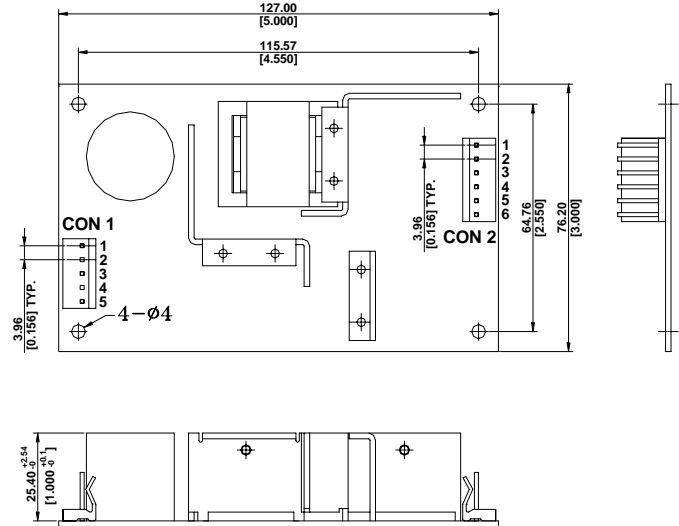
● 1 OUTPUT

PIN1~PIN3	V1
PIN4~PIN6	RET

● 2,3 OUTPUTS (V3 POSITIVE) 2,3 OUTPUTS (V3 NEGATIVE)

PIN1	V2	PIN1	V2
PIN2~PIN3	V1	PIN2~PIN3	V1
PIN4~PIN5	RET	PIN4~PIN5	RET
PIN6	V3 (+)	PIN6	V3 (-)

■ MECHANICAL DRAWING (3"*5"*1.0")



TOLERANCE: $\frac{\text{mm} \pm 0.5}{[\text{inch}] \pm 0.02}$

UNIT: $\frac{\text{mm}}{[\text{inch}]}$